



motoalliance

23001 Industrial Blvd, Rogers, MN 55374 / 1-866-527-7637
www.motoalliance.com

MOTOALLIANCE PLOW MOUNT MA11103 Polaris Yamaha Grizzly 660

Thank you for purchasing our MotoAlliance plow mount(s). You now own a premium, custom plow mount to allow you to use your plow with your ATV. Please note the following instructions and heed all warnings.

- Your ATV and/or plow system can cause death or injury, please use caution and common sense when operating your unit.
- Read your Plow Operator's Manual, your Winch Operator's Manual, and all warning labels before operating your ATV.
- Operate your ATV at a walking speed with the blade installed. Do not exceed 5 mph (8 km/h) even with the blade up.
- Do not operate the ATV on slopes greater than 10 degrees with the plow installed.
- Always lower the plow to the down position before leaving your ATV unattended.

SEVERE INJURY OR DEATH MAY RESULT IF YOU ARE NEGLIGENT.

Parts List:

Part Number	Description	Quantity
1	5/16" Flat Washer	4
2	5/16" Lock Washer	4
3	3/8" x 1" Bolt	1
4	5/16" Nylock Nut	4
5	1/4" Nylock Nut	6
6	3/8" Nylock Nut	1
7	1/4" x 1 1/4" Bolt	4
8	1/2" Spacer	4
9	8mm x 20mm Bolt	4
10	5/16" x 1 1/2" U-Bolt	2
11	Mount Bracket Right	1
12	Mount Bracket Left	1
13	Mount Cross Member	1

Plow Mount Assembly:

1. Remove the forward two bolts under the ATV on both sides that attach the foot-rest to the bike chassis.
2. Take both mounting plates from the kit, place them over the holes. Attach the mounting plates to the bike using four 8mm x 20mm bolts, 5/16" flat washers, and 5/16" lock washers as shown in Figure 1.

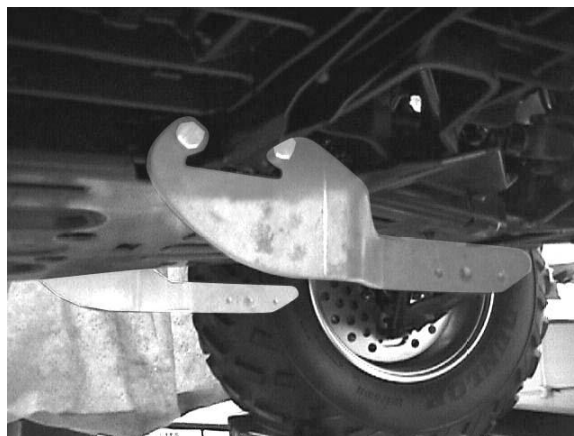


Figure 1

3. Lock washer should be place between the head of the bolt and the flat washer. **Do not tighten the bolts all the way;** you will do this later in the installation. Installed properly, the brackets will bend inward.
4. Cut away any material on the skid plate with a serrated blade that may interfere with the right mounting bracket. There should be no interference with the left mounting bracket.
5. Place the cross-member plate between the two bracket plates.
6. Insert the plow mounting pins; this will help align the mount. The top holes on the cross-member plate should be toward the front of the bike.
7. Using four ¼" bolts and nuts, attach the cross-member the bracket plates. Each bolt will go through a ½" spacer positioned between the cross-member and the brackets as shown in Figure 2.

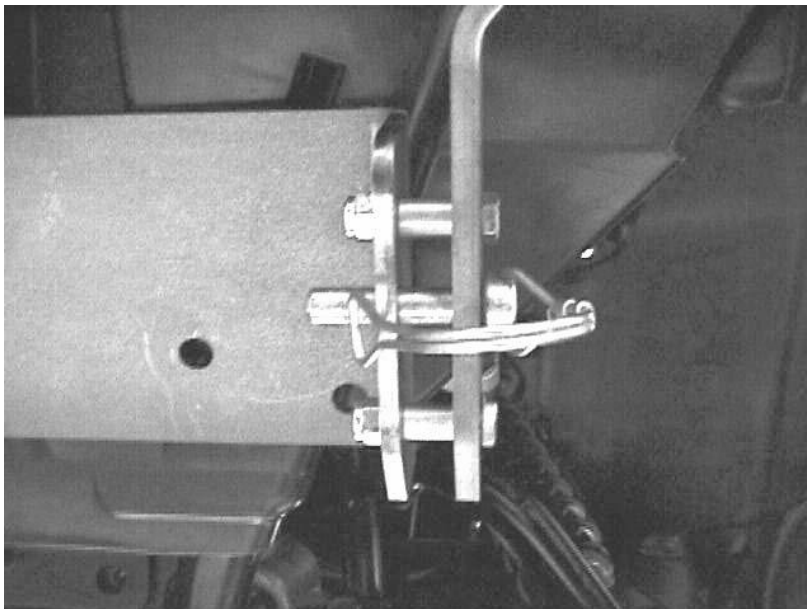


Figure 2

8. Tighten all bolts down snugly. The plow mounting pins can now be removed and stored.



9. Using the existing cross-member plate holes as locators, drill through all four cross-member holes with a 5/16" drill bit as shown in Figure 3.

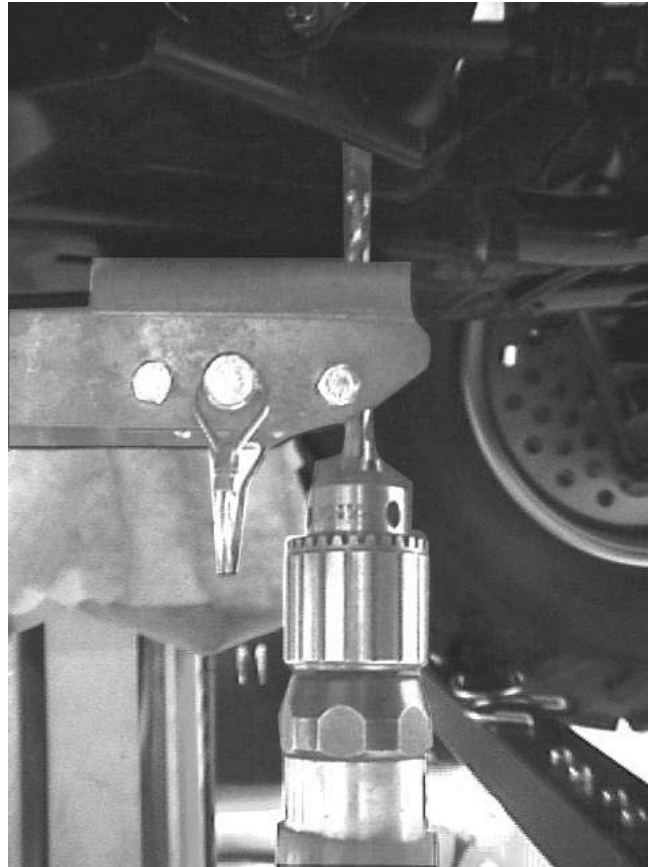


Figure 3

10. Drill only through the skid-plate and nothing else on the bike.
11. Place the two 1-1/2" width U-bolts over the chassis tubing, through the skid-plate, and through the cross-member plate as shown in Figure 4.



Figure 4: U-Bolt and Mount

12. Drill more material off the skid-plate only if necessary.
13. Now attach the four 5/16" nuts to the U-bolts and tighten snugly.
14. ***Now go back and tighten all four bolts on the mounting brackets as shown in Figure 1.***
15. The plow mount plate assembly should look like the one in Figure 5. ***Check to make sure all the bolts are fastened tightly.*** Once you have done that, the installation of the plow mount is completed. Attach your plow to the mount using the plow mount pins and proceed to one of the sections below in regards to your preferred raising mechanism.



Figure 5

Plow Installation:

1. Slide the plow into position with the tubes under the ATV. Lift the end of the tube assembly into position so the holes in the tube wings line up with the 3/8" holes in the frame brackets.
2. A Phillips head screwdriver may be used to align the holes. Insert both 3/8" pins and hook the retaining clips on the ends of the pins to secure the plow to the ATV.
3. The plate should now be a permanent part of your ATV and will not interfere with clearance. The plow can be easily attached and detached on the welded u-bolt with the clevis hook on a winch or a manual lift assembly.